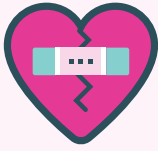


Supporting You and Your Growing Family

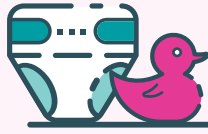
EVERY STEP OF THE WAY

Services Offered



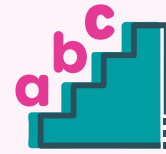
Emotional Support

Early screening for mood and anxiety challenges, with direct connections to mental health resources.



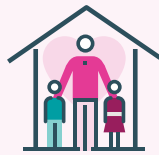
Mom & Baby Supplies

Families get infant supplies like diapers, wipes, and more.



Health Education

Information on newborn care, safe sleep, and essential health practices.



In-home Support

Tools and resources to make parenting easier from nurses, clinicians, and parent coaches in home, virtually, or any comfortable location.



Breastfeeding & Feeding Support

Guidance on feeding, lactation, and nutrition to help you and your baby thrive.

How It Works

1

Discover the Benefits

Visit our website or call us to learn more about the program and see if Welcome Baby: R2R is the right fit for you.

2

Self-Refer

Fill out our self-referral form online or reach out to us by phone or email.

3

Receive Support at Home

Get connected to the services you deserve during pregnancy and your baby's early years.

Who is Eligible

Families in Yolo County who are pregnant or parenting a child under the age of 2 – whether you're a first time parent or welcoming another child.



Welcome Baby
ROAD TO RESILIENCE

Connect With Us



first5yolo.org/welcomebaby



Call or Text (916) 403-2905



welcomebaby.r2r@communicareole.org

