

HOW MUCH DID WE DO?

5,390
Yolo participants served

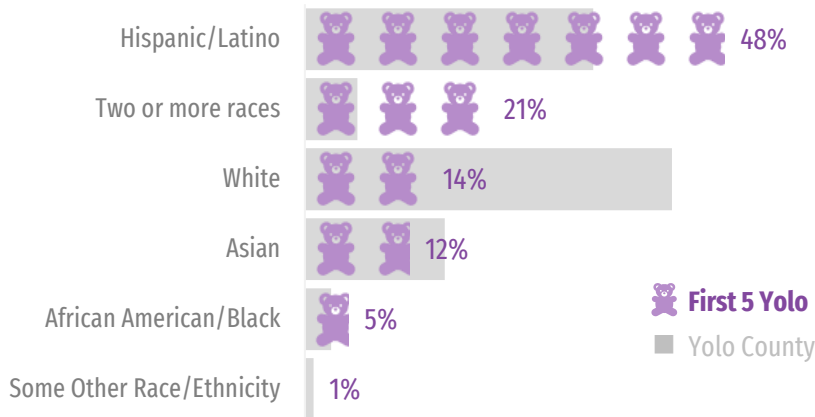
Children 0-5: 2,424
Parents/Caregivers: 2,602
Children 6-18: 206
Providers: 158

WHOM DID WE SERVE?

A majority of children served were birth through age 2

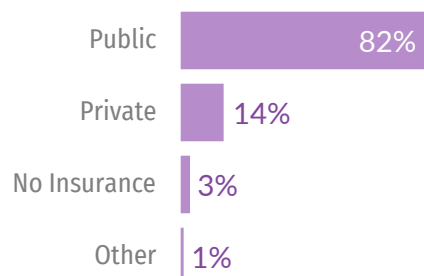
56%
Ages 0-2

Race/ethnicity of children served by First 5 Yolo compared to Yolo county population averages



While 97% of children served had health insurance coverage, a majority relied on public health insurance.

Insurance coverage of families served



Our Mission

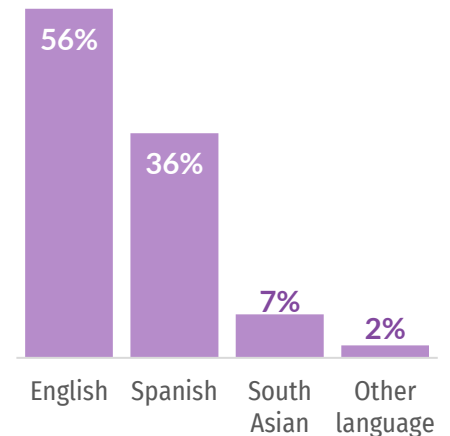
First 5 Yolo will assist our community in raising children who are healthy, safe, and ready to learn. We will ensure that our resources are effectively used, and all community voices are heard.

What We Do

First 5 engages community partners to design, improve, advocate for, and fund critical services to support the needs of children and their families prenatally through age five by administering Proposition 10 (tobacco tax) and other funds.

First 5 works to build a coordinated system of care to achieve more equitable outcomes for young children and their families.

44% of parents served were non-English speakers



Parents speaking South Asian languages (Farsi/Urdu, Hindi, Punjabi) increased from 2% in 2022 to 7% in 2024

HOW WELL DID WE DO IT? & IS ANYONE BETTER OFF?

First 5 Yolo and Funded Partners focused on keeping children healthy, safe and connected

The following indicators represent the work from First 5 Funded Partners in Road to Resilience initiative (R2R) , Mobile Client Navigator, and Attachment Biobehavioral Catch-Up Home Visiting (ABC).



99% of families avoided the need for entry or re-entry into Child Welfare Services



100% of families connected to critical needs within 24 hours by Mobile Client Navigator



100% of parents improved responsiveness to their child

First 5 Yolo Initiatives



Welcome Baby and Road To Resilience: Centrally coordinated home visiting and navigation services offering higher-risk prenatal and postpartum families culturally responsive services so that children get the best start in life.



94% of enrolled children received their last recommended well-child visit



100% of families screened for depression/anxiety and received health literacy materials



84% of enrolled children were up to date on immunizations



IMPACT Legacy Coordination of Quality Counts California system including coaching for licensed and licensed exempt childcare providers and trainings to increase access to quality early learning.



12 Family, Friend, Neighbor (FFN) providers working towards licensure



100% of Childcare Providers were connected to Help Me Grow



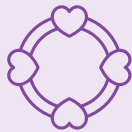
69 Community of Practice Sessions were convened for Childcare Providers



Help Me Grow a universal early childhood mental health access and linkage hub expanding early identification and intervention, so all children have the support they need to reach their full potential.



1,089 Children screened to check on their learning, growth and behavior

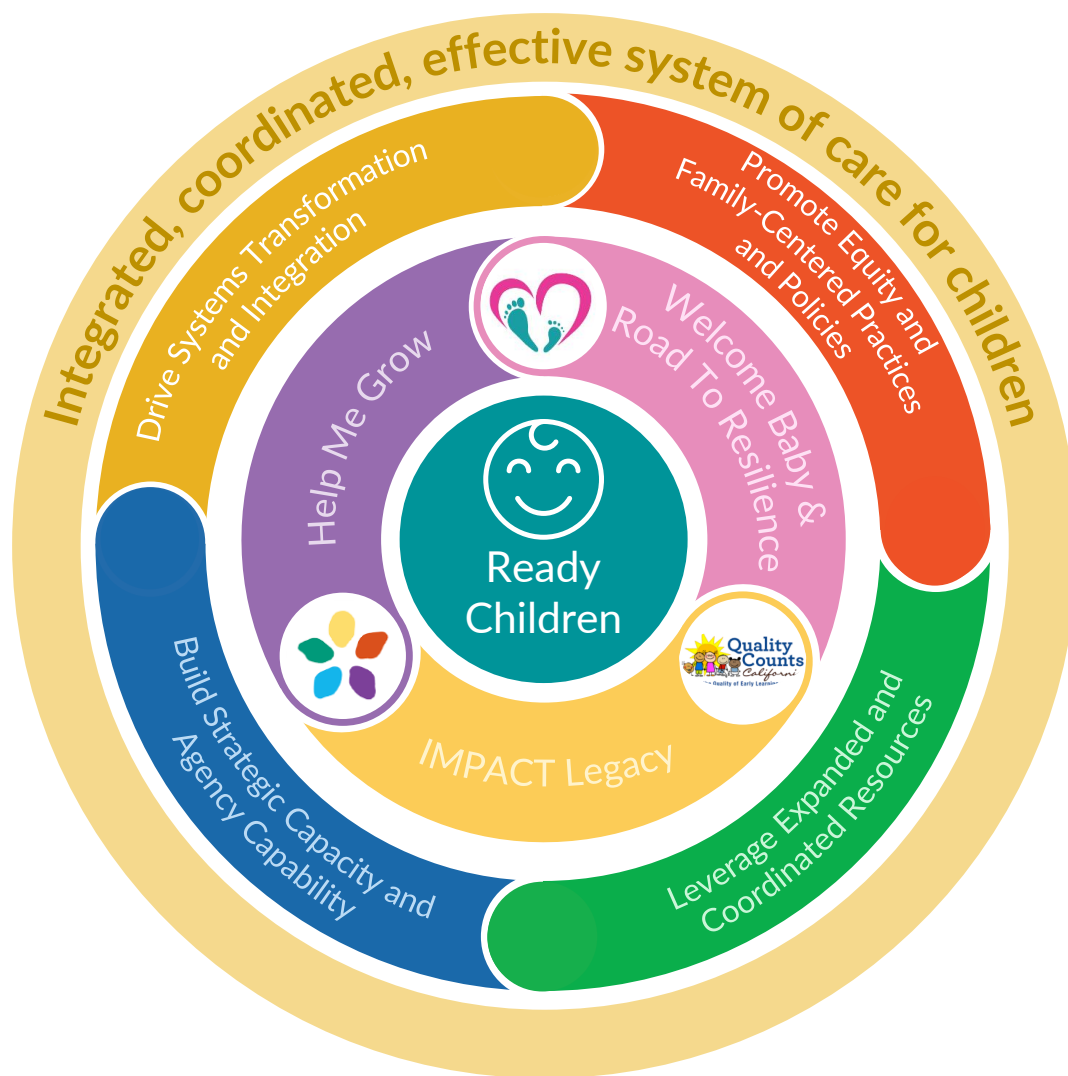


85% of children at risk of delays connected to early intervention services



93% of caregivers reported improved functioning and mental health

Systems Change: It's All About Relationships!



First 5 Yolo's three main initiatives (R2R, IMPACT Legacy, and Help Me Grow) and other Funded Partners, address First 5 Yolo's four Strategic Priority Areas, all of which work together to promote improved health, safety and quality early learning goals.

Strategic Priority Areas

(Supported by three main initiatives)



Drive Systems Transformation and Integration



Promote Equity and Family-Centered Practices and Policies



Leverage Expanded and Coordinated Resources to our Community



Build Strategic Capacity and Agency Capability

Systems Change Makers: Welcome Baby Nurse visits support families and their newborns

"It was so important to have the Welcome Baby Nurse come for a personal visit to my house. I felt very taken care of in a vulnerable time. We discovered that my baby was growing at a healthy rate, and she ensured I was adjusting well."

~Welcome Baby Parent

Moving Forward First 5 Yolo will continue:

- Addressing systemic barriers to care
- Improving **service delivery and aligning funding streams** for equitable outcomes and **sustainability**
- Fully integrating Welcome Baby and Road to Resilience into one effort providing coordinated home visiting services
- Bridging **medical homes to community resources with CHWs in Welcome Baby: Road to Resilience**
- Building provider capacity to promote nurturing care for children and families

