

HOW MUCH DID WE DO?

6,117

Yolo participants served

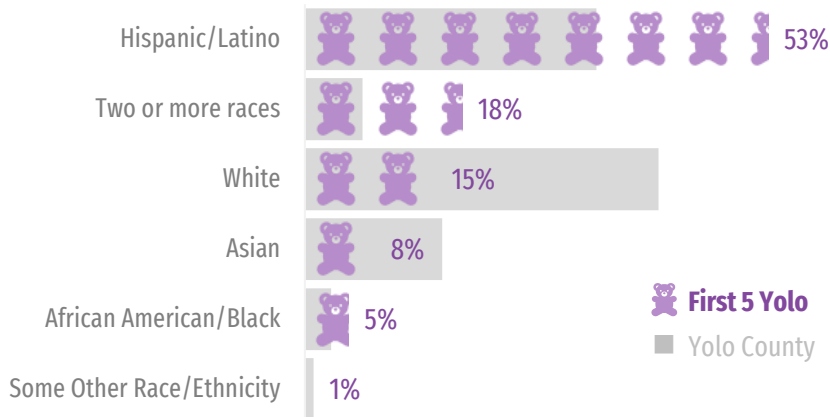
Children 0-5: 2,801
Parents/Caregivers: 2,922
Children 6-18: 186
Providers: 208

WHOM DID WE SERVE?

A majority of children served were birth through age 2

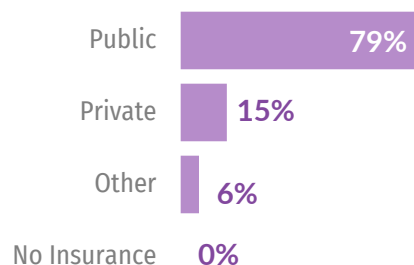
57%
Ages 0-2

Race/ethnicity of children served by First 5 Yolo compared to Yolo county population averages



While 100% of children served had health insurance coverage, a majority relied on public health insurance.

Insurance coverage of families served



Our Mission

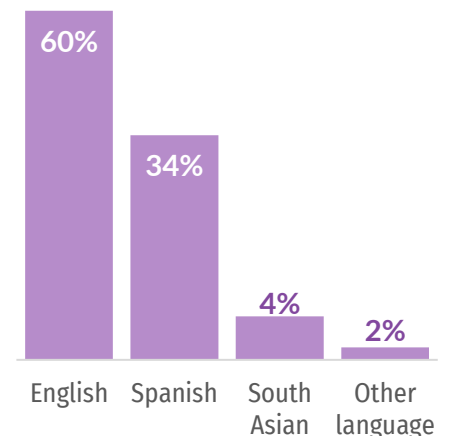
First 5 Yolo will assist our community in raising children who are healthy, safe, and ready to learn. We will ensure that our resources are effectively used, and all community voices are heard.

What We Do

First 5 engages community partners to design, improve, advocate for, and fund critical services to support the needs of children and their families prenatally through age five by administering Proposition 10 (tobacco tax) and other funds.

First 5 works to build a coordinated system of care to achieve more equitable outcomes for young children and their families.

40% of parents served were non-English speakers



HOW WELL DID WE DO IT? & IS ANYONE BETTER OFF?

First 5 Yolo and Funded Partners focused on keeping children healthy, safe and connected

The following indicators represent data from First 5 Funded Programs Welcome Baby:Road to Resilience initiative (WB:R2R), Mobile Client Navigation, and Attachment & Biobehavioral Catch-Up Home Visiting (ABC).



99% of families in home visiting avoided the need for entry or re-entry into Child Welfare Services



100% of families experiencing a crisis were connected to critical needs within 24 hours by a Mobile Client Navigator



91% of parents served by ABC improved responsiveness to their child

First 5 Yolo Initiatives



Welcome Baby:Road To Resilience provides a nurse home visit after birth and, for families needing more support, longer-term home visiting. The program bridges health and social systems to deliver coordinated, culturally responsive care that gives children the best start in life.



93% of enrolled children received their last recommended well-child visit



100% of families were screened for depression/anxiety and received health literacy materials



79% of enrolled children were up to date on immunizations



Help Me Grow a universal early childhood mental health access and linkage hub expanding early identification and intervention, so all children have the support they need to reach their full potential.



1,101 Children screened to check on their learning, growth and behavior



72% of children at risk of delays connected to early intervention services within 60 days



93% of caregivers reported improved functioning and mental health



IMPACT Legacy coordinates the Quality Counts California system including coaching for licensed and licensed exempt childcare providers and trainings to increase access to quality early learning.



11 Family, Friend, Neighbor (FFN) providers working towards and 4 obtained licensure

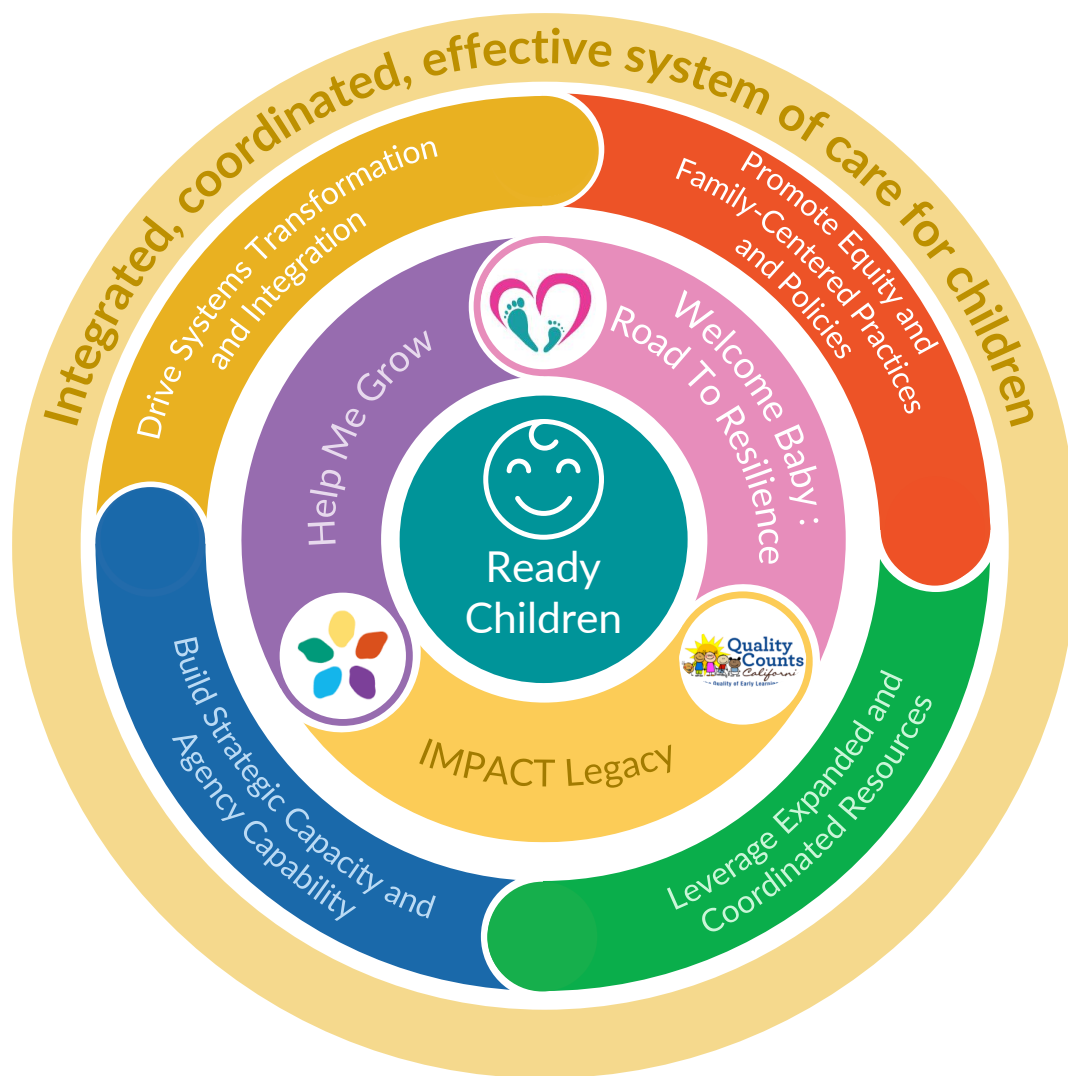


100% of Childcare Providers were connected to Help Me Grow



76 Community of Practice Sessions were convened for Childcare Providers

Systems Change: It's All About Relationships!



Systems Change Makers:

Community Health Workers Build Confidence and Life-long Health

A WB:R2R nurse visited a new mom struggling with postpartum depression and anxiety after a difficult birth. She felt like a failure and believed she wasn't producing enough milk for her baby. The nurse visit helped ease her anxiety and gain confidence in her breastfeeding skills. Beyond nutrition and parent-child bonding which are critical to optimal child development, breastmilk is the most powerful personalized medicine. It is specially designed and adaptable to each baby's health needs and environment, packed with antibodies that protect them against disease and death.

"Our program bridges a critical gap for new families by bringing skilled postpartum and lactation support directly into their homes, ensuring every parent feels confident, supported, and safe. Current data shows how our services have strengthened our community's health at its very beginning—and continues through their first year. I'm so proud I can be a part of the difference we are making in our county."

—Marissa
WB:R2R Registered Nurse

First 5 Yolo's three main initiatives (Welcome Baby: Road To Resilience, Help Me Grow, and IMPACT Legacy) and other Funded Partners, address First 5 Yolo's four Strategic Priority Areas, all of which work together to promote improved health, safety and quality early learning goals.

Key Accomplishments



F5 Yolo became the first First 5 to bill Medi-Cal CHW, in February 2025.



CalWORKs Home Visiting Parent Child+ launched in January 2025 and exceeded enrollment targets in first year.



In February 2025, Welcome Baby and R2R fully integrated services and adopted a shared health record system to enhance coordination and seamless care for families.



Turned The Curve Together: 61% of Yolo Medi-Cal children were screened for development in 2024. This was above the Partnership Plan-wide rate of 29% and state and national benchmarks.

"By bringing compassionate, personalized support directly into the home, our visit helps close the gap between isolation and confidence, fostering both success in lactation and overall health."

—Leah
WB:R2R Registered Nurse