

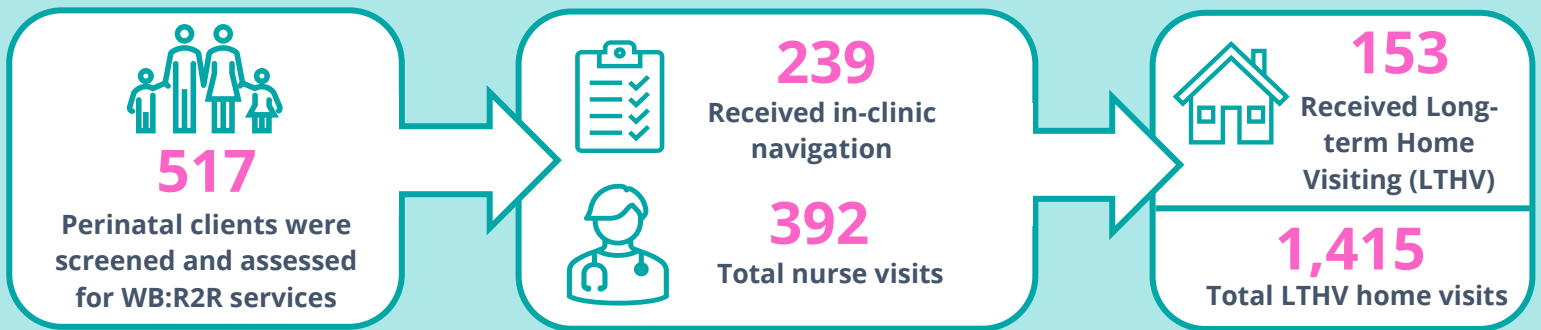
WB:R2R Program Summary

July 1, 2024 – June 30, 2025

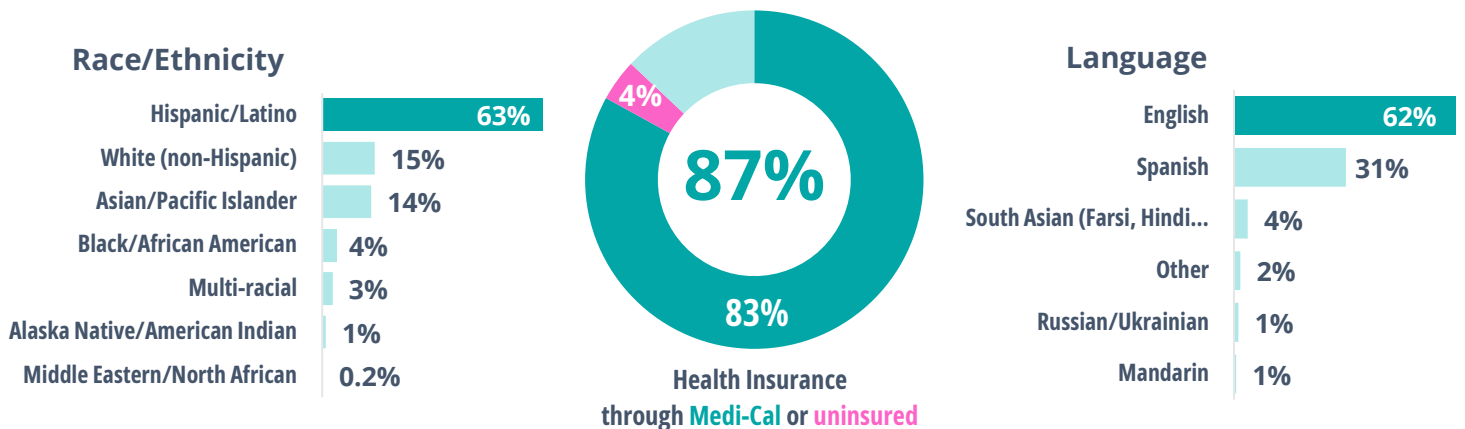


Welcome Baby: Road to Resilience (WB:R2R) provides vital, early services to families living in Yolo County with a child under the age of two. Families receive in-clinic resource navigation, a nurse home visit postpartum and follow-up, and, as needed, longer-term intensive home visiting services during pregnancy and the child's early years. WB:R2R's tailored, early approach enables timely identification and intervention to promote maternal and child health, prevent child maltreatment, and build a foundation for early learning and school readiness.

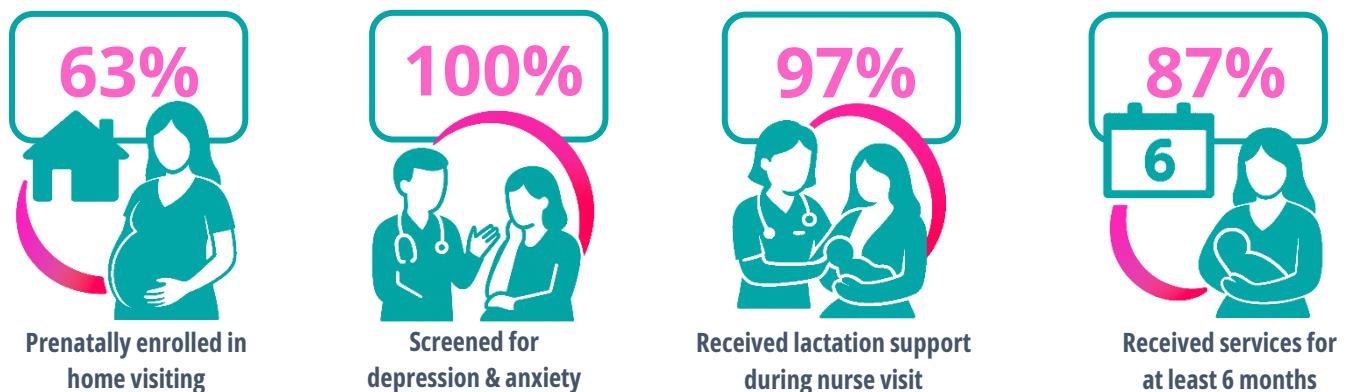
HOW MUCH DID WE DO?



WHOM DO WE SERVE?



HOW WELL DID WE DO IT?



ARE CHILDREN BETTER OFF?



98%

Avoided the need
to enter Child
Welfare Services



50%

Exclusively
Breastfeeding at
3 months
Higher than the Yolo
County rate of 42%



93%

Up-to-date on
well-child visits
Higher than the local clinic
rate of 40% at 6 months



79%

Up-to-date on
immunizations
Higher than the local clinic
rate of 58% at 6 months

Preventing child welfare involvement breaks cycles of intergenerational trauma and builds stronger families.

ARE PARENTS BETTER OFF?



98%

Received medical
postpartum visits



96%

Showed improvement
in parenting skills



84%

Reduced or did not
use alcohol, drugs,
and tobacco



91%

Of caregivers with
initial depressive
symptoms showed
improvement after 6
or more months of
home visiting.

Postpartum care is key to identifying depression and life-threatening complications.

HOW DOES WB:R2R TRANSFORM SYSTEMS?

"The program is necessary for any mom, whether it's their first or second baby, because **every baby is so different** and a lot can happen in those first few days. **It is so important to have someone in your home to support you.**"

~ WB:R2R parent

"...I feel like I matter and that **I am genuinely cared for...**"
~ WB:R2R parent

"Thank you for going to this patient's home. You **possibly saved this baby's life.**"

~ Pediatrician, Medical Partner

WB:R2R is leading systems change by transforming how early family support is delivered across Yolo County. Through partnerships with 10 different medical systems, WB:R2R is embedding coordinated care into clinical settings, identifying and addressing systemic barriers, and ensuring families receive needed services to advance birth equity.



Welcome Baby
ROAD TO RESILIENCE

